

FFE100T

RILEVATORE TERMOVELOCIMETRICO

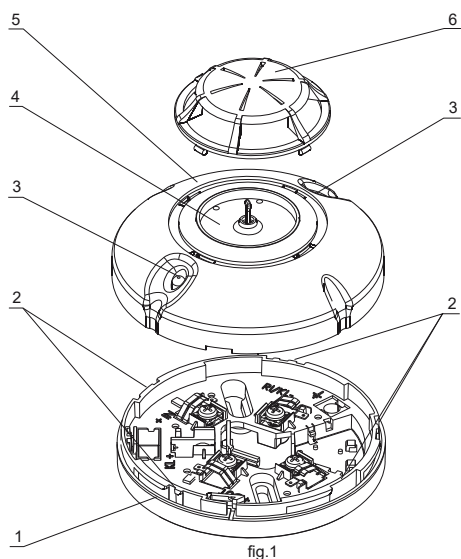


fig.1

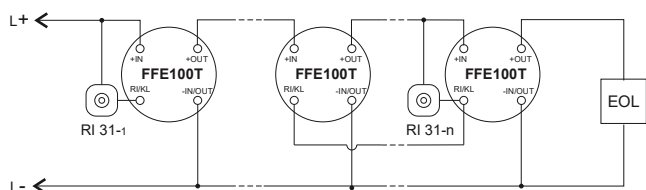


fig.2

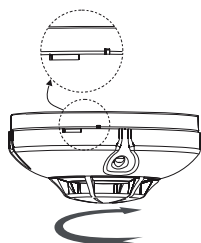


fig.3.1

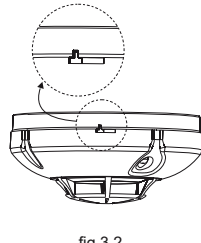


fig.3.2

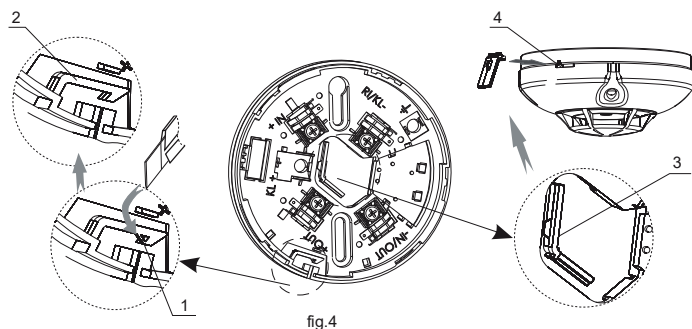


fig.4

Tensione di alimentazione: 10/30 Vdc
Assorbimento minimo: 120pA/22,5Vdc
Assorbimento massimo: 18mA/10Vdc - 55mA/30Vdc
Sensibilità: 2000 +A1:2002 secondo EN54-7
Ritardo: T-10
Protezione area: secondo EN54-14
Tipo collegamento: due fili (fig. 2)
Grado di protezione: IP43
Temperature di funzionamento: -10°C/oltre 55°C
Dimensione: Ø 100mm H 52